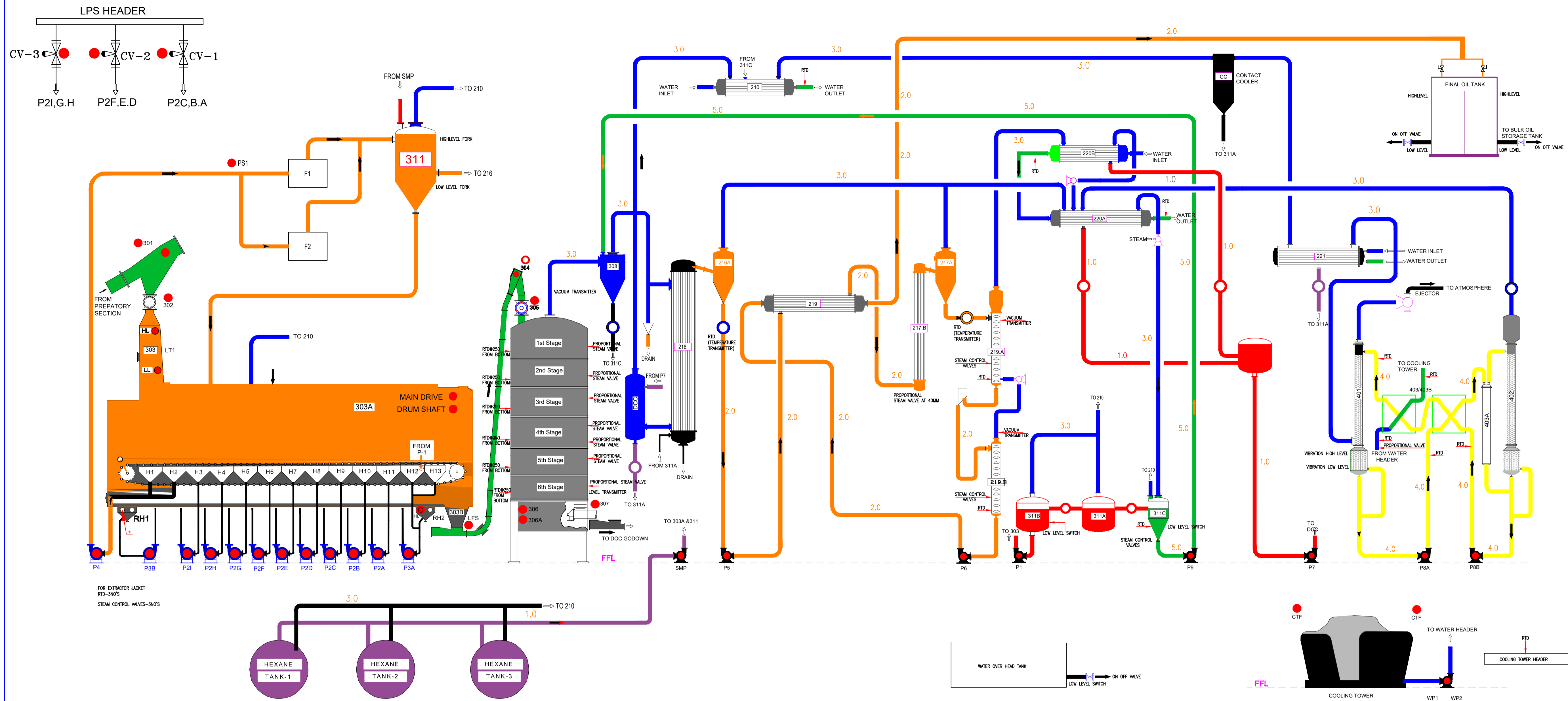


# CONTINUOUS SOLVENT EXTRACTION PLANT

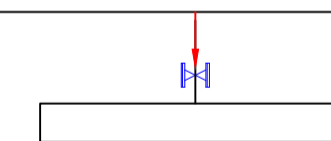


### LIST OF EQUIPMENTS

Item Nos.	Description
301	INCOMMING CONVEYOR
302	ROTARY VALVE
303	FEED HOPPER
303A	EXTRACTOR
303B	DISCHARGE HOPPER
306	DESOLVENTIZER TOASTER
306A	MEAL DISCHARGE CONVEYOR
307	OUTGOING CONVEYOR
308	WET DUST CATCHER
311	MISCELLA TANK
FOT	FINAL OIL TANK
MF	MISCELLA FILTER
SEP 311A	WATER SOLVENT SEPARATOR
SEP 311B	SOLVENT WORK TANKS
SEP 311C	WASTE WATER BOILER
216	RECUPERATOR
217	EVAPORATOR
219A	STRIPPER
219B	DRIER
220A	MAIN HEXANE VAPOUR CONDENSER
DDC	DIRECT CONTACT CONDENSER

Item Nos.	Description
221	OIL/MISCELLA HEAT EXCHANGER
210	DT VAPOUR CONDENSER
219A	STRIPPER CONDENSER
401	SOLVENT VAPOUR ABSORBER
402	ABSORBER OIL STRIPPER
403/403B	HEAT EXCHANGER
403A	HEATER
<b>pumps</b>	
P1	FRESH SOLVENT PUMP
P2a -P2i	CIRCULATION PUMP
P3A/P3B	RINSING PUMP
P4	MISCELLA PUMP
P5	RISING FILM PUMP
P6	FINAL OIL PUMP
P7	HEXANE CONDENSATE PUMP
P8A/P8B	ABSORBER PUMP
P9	HOTWATER PUMP
SMP	SOLVENT MAKEUP PUMP
WP1	WATER PUMP
WP2	WATER PUMP
CTF	COOLING TOWER FAN 2NO's

NOTE:-100MM STEAM VALVE AT MAIN HEADER FOR ON OFF CONTROL



Pipeline code	Description(colour)
1.0	SOLVENT LINES <span style="color: red;">█</span>
2.0	MISCELLA LINES <span style="color: orange;">█</span>
3.0	VAPOUR LINES <span style="color: blue;">█</span>
4.0	OIL LINES <span style="color: yellow;">█</span>
5.0	COLD WATER INLET LINES <span style="color: green;">█</span>

<b>GOBIND SOLVENT &amp; REFINING PLANT LUDIYANA</b>			
DRAWN	KLMN	CLIENT	—
CHKD	I.T BABU	TITLE	<b>FLOW DIAGRAM FOR SEP</b>
APPR		DRG. NO.	
DATE	24.02.22		